

**Company : Woodside Energy Limited**

Well : Somerset-1

Interval : 1186.00 - 2489.58 meters

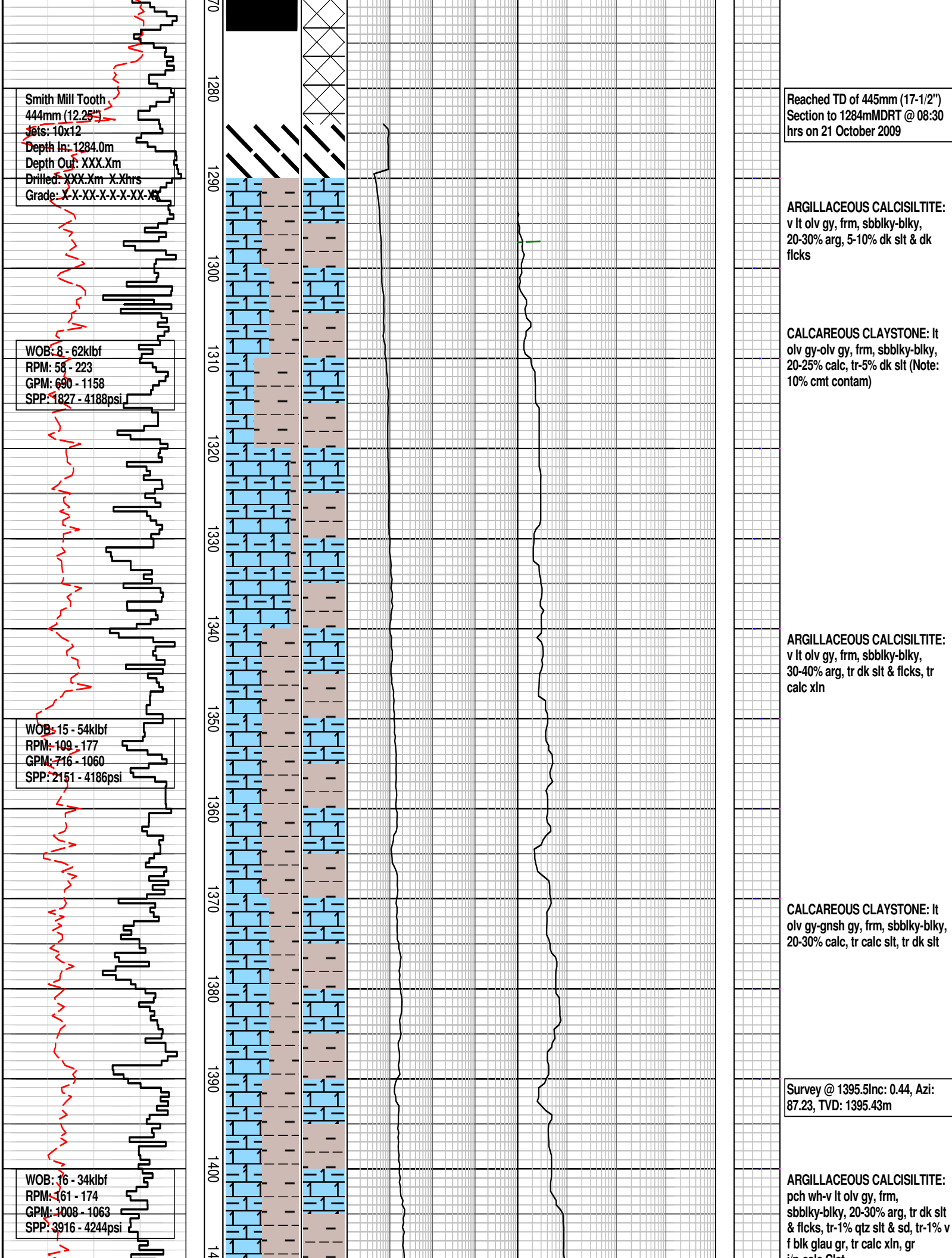
**Created** : 27/Oct/2009 8:15:37 AM

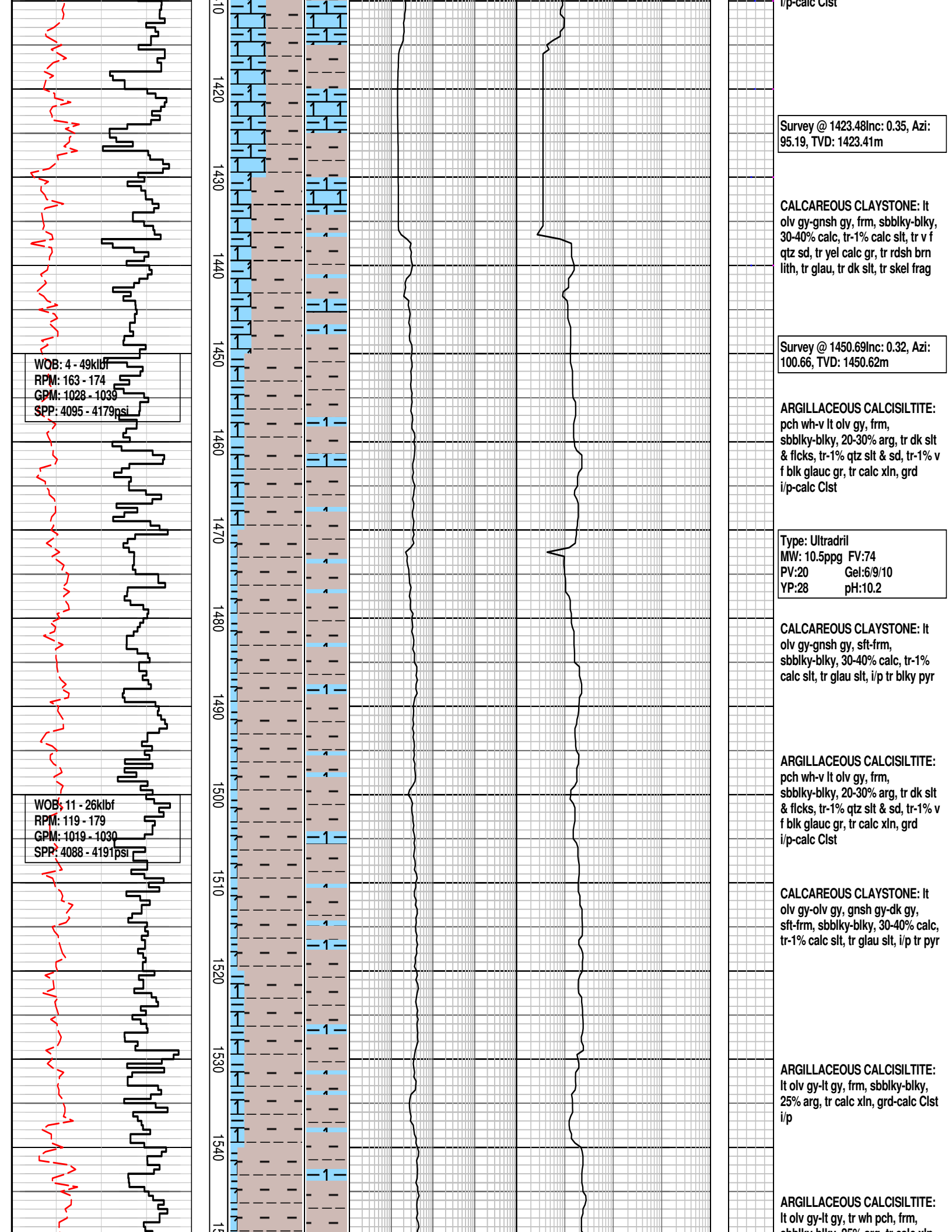


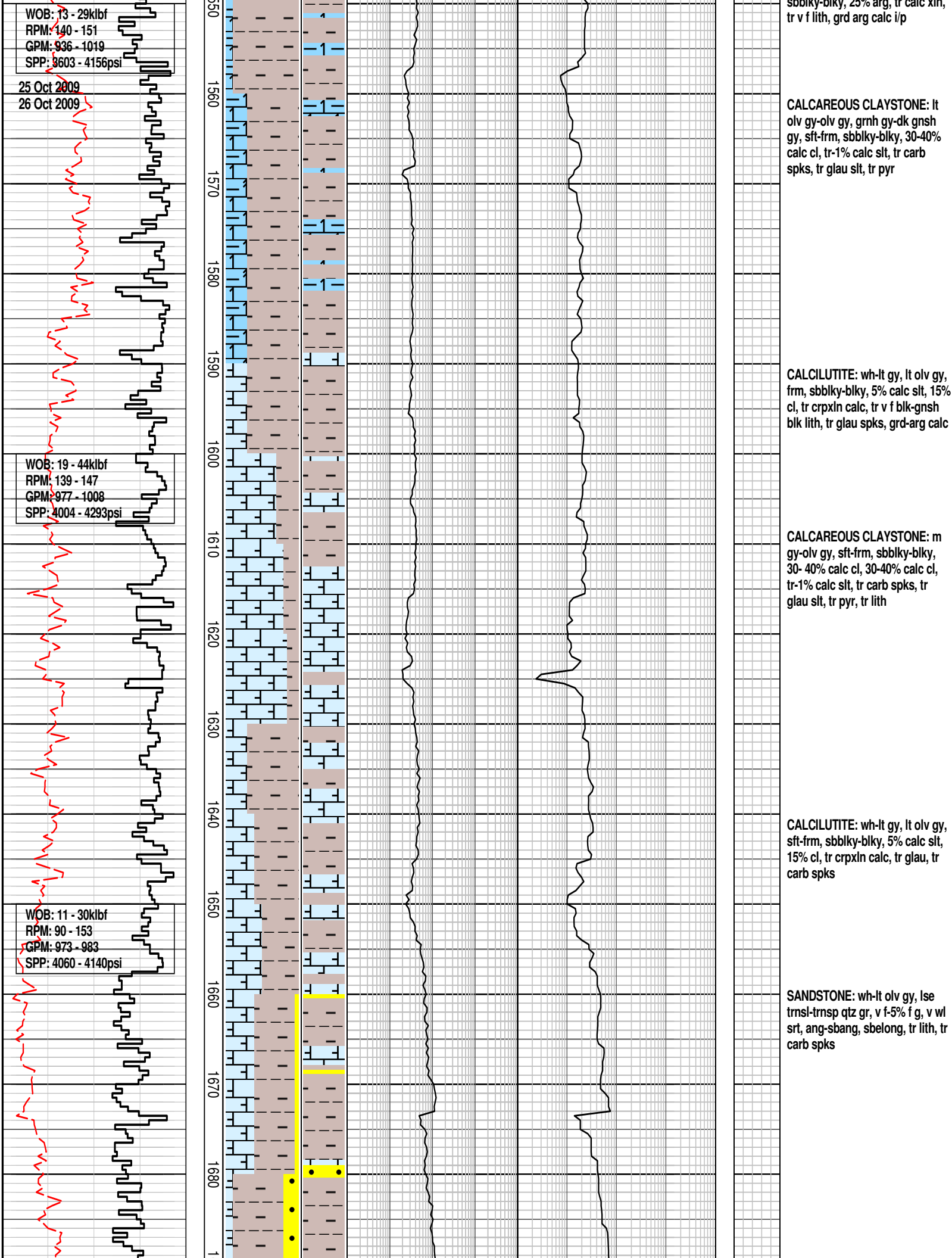
## INTEQ

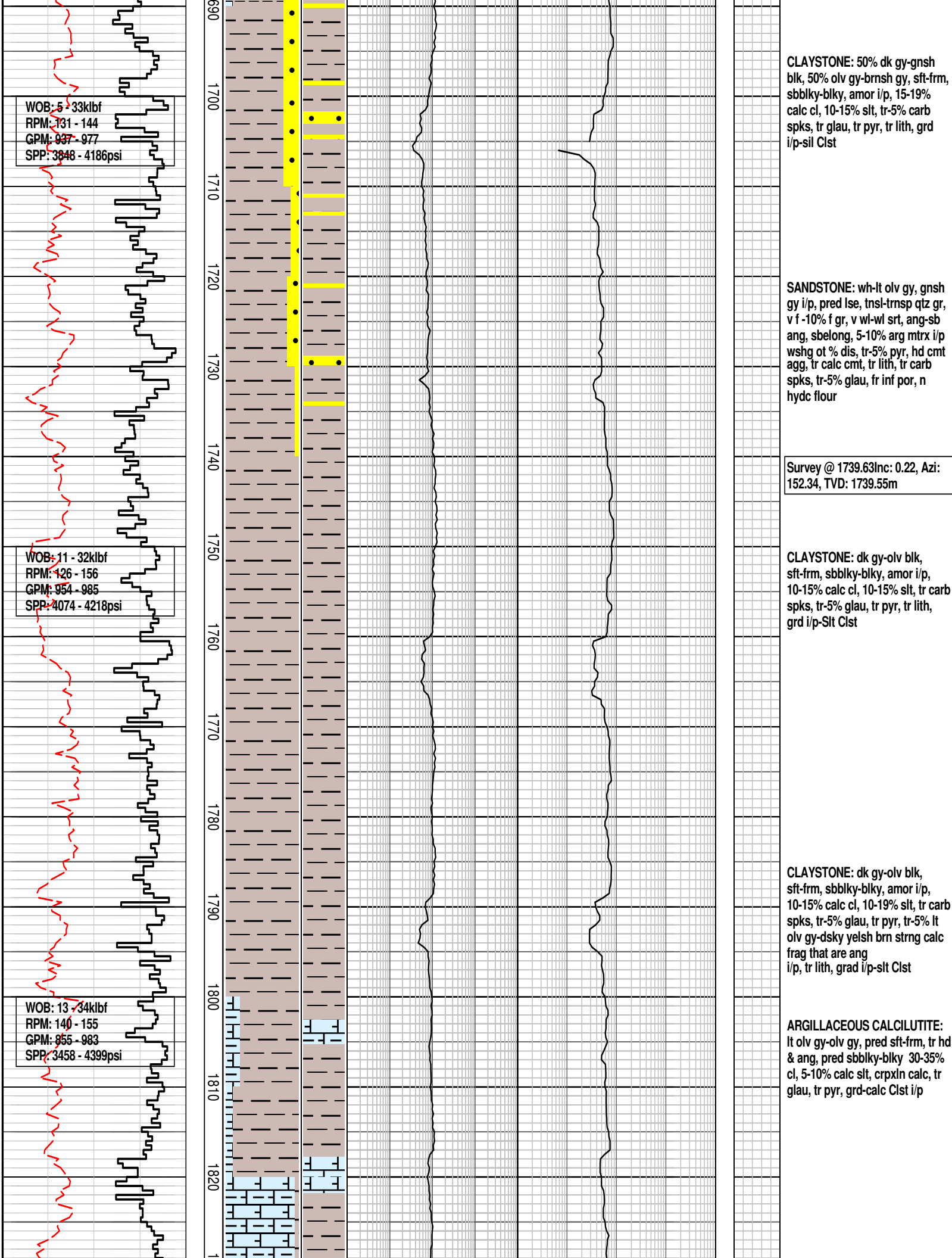
## FORMATION EVALUATION LOG

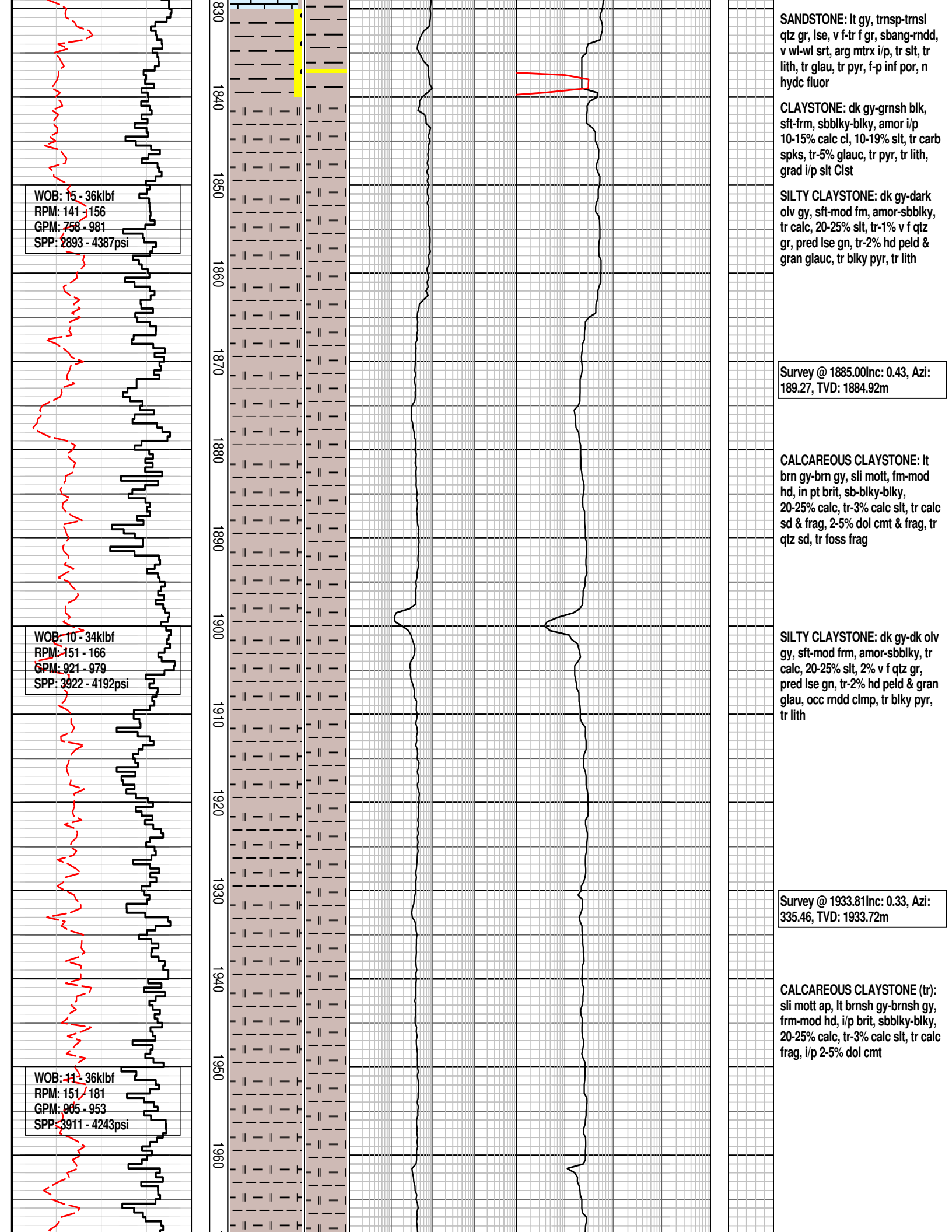
| WOB (klbf)  |  | ROP (m/hr)                  |      | MD meters 1:500 | CORE | LITHOLOGY % | INTERPRETED LITHOLOGY | TOTAL GAS & RESISTIVITY | CHROMATOGRAPH |      |      |                 |      | CALC  | REMARKS |
|---|--|-----------------------------|------|-----------------|------|-------------|-----------------------|-------------------------|---------------|------|------|-----------------|------|---|---------|
| Total Gas (%)   |  | Methane (%)                 |      |                 |      |             |                       | Calcite                 |               |      |      |                 |      |   |         |
| 0.01 0.1 1 10   |  | 0.01 0.1 1 10               |      |                 |      |             | 0.01 0.1 1 10         |                         |               |      |      | 20 40 60 80 100 |      |   |         |
|   |  | Ethane (%)                  |      |                 |      |             | 0.01 0.1 1 10         |                         |               |      |      | Dolomite        |      |   |         |
|   |  | Propane (%)                 |      |                 |      |             | 0.01 0.1 1 10         |                         |               |      |      | 100 80 60 40 20 |      |   |         |
|   |  | iso-Butane (%)              |      |                 |      |             | 0.01 0.1 1 10         |                         |               |      |      |                 |      |   |         |
|   |  | n-Butane (%)                |      |                 |      |             | 0.01 0.1 1 10         |                         |               |      |      |                 |      |   |         |
|   |  | iso-Pentane (%)             |      |                 |      |             | 0.01 0.1 1 10         |                         |               |      |      |                 |      |   |         |
|   |  | n-Pentane (%)               |      |                 |      |             | 0.01 0.1 1 10         |                         |               |      |      |                 |      |   |         |
|   |  |                             |      |                 |      |             |                       |                         |               |      |      |                 |      |   |         |
|   |  | 1190                        | 1200 | 1210            | 1220 | 1230        | 1240                  | 1250                    | 1260          | 1270 | 1280 | 1290            | 1300 |   |         |
| <div>WOB: 23 - 61klbf<br/>RPM: 185 - 227<br/>GPM: 1019 - 1135<br/>SPP: 3441 - 4196psi</div> |  |                             |      |                 |      |             |                       |                         |               |      |      |                 |      | Survey @ 1203.66Inc: 0.95, Azi: 60.78, TVD: 1203.60m              |         |
|   |  |                             |      |                 |      |             |                       |                         |               |      |      |                 |      | Drill with seawater and Hi-vis PHG & Gum sweeps Returns to Seabed |         |
| <div>WOB: 26 - 50klbf<br/>RPM: 187 - 227<br/>GPM: 1001 - 1183<br/>SPP: 3353 - 4165psi</div> |  | No return to gas system     |      |                 |      |             |                       |                         |               |      |      |                 |      | Survey @ 1251.88Inc: 0.94, Azi: 59.95, TVD: 1251.82m              |         |
|   |  | MWD (Incl and azimuth only) |      |                 |      |             |                       |                         |               |      |      |                 |      | Survey @ 1254.36Inc: 0.22, Azi: 29.97, TVD: 1254.29m              |         |



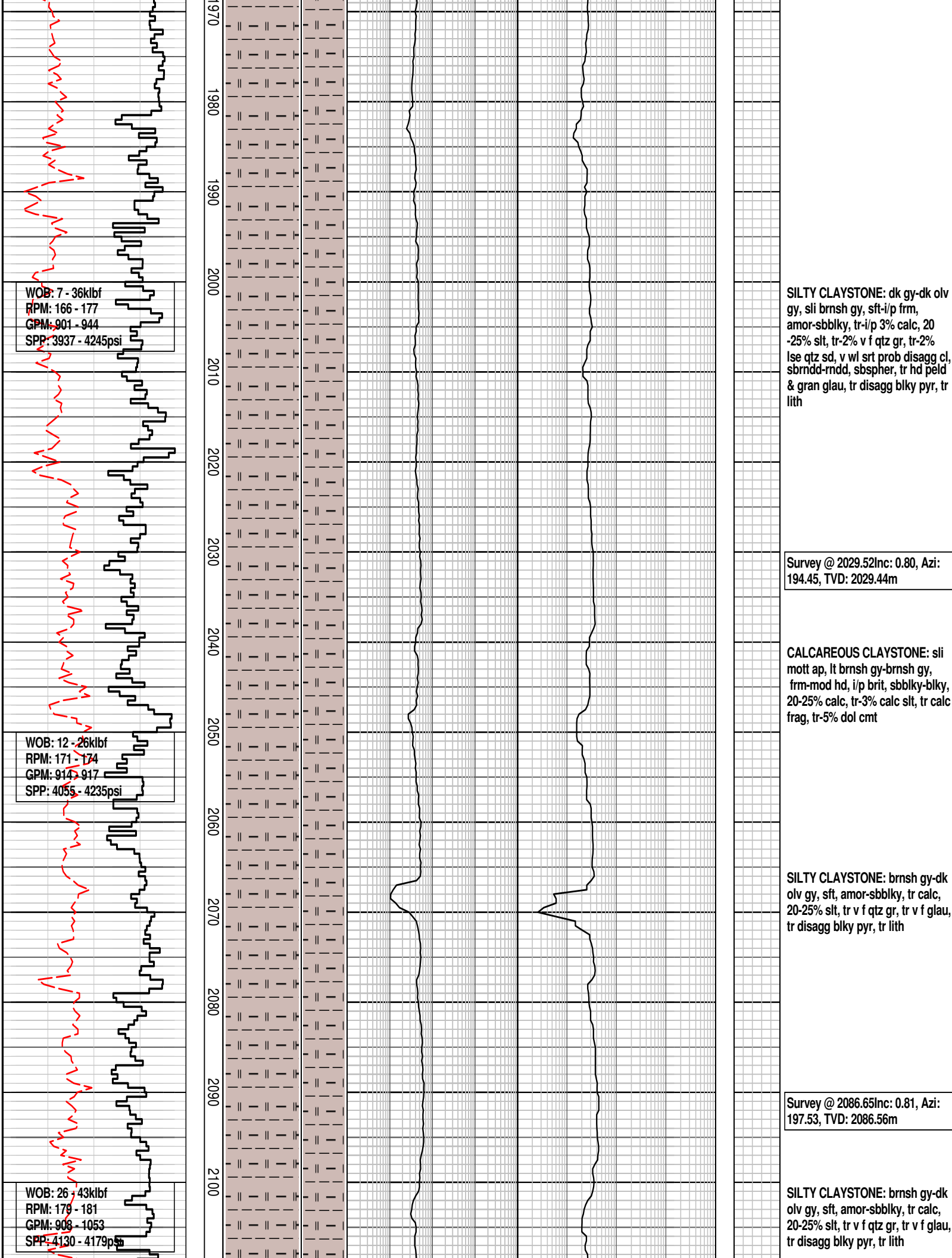


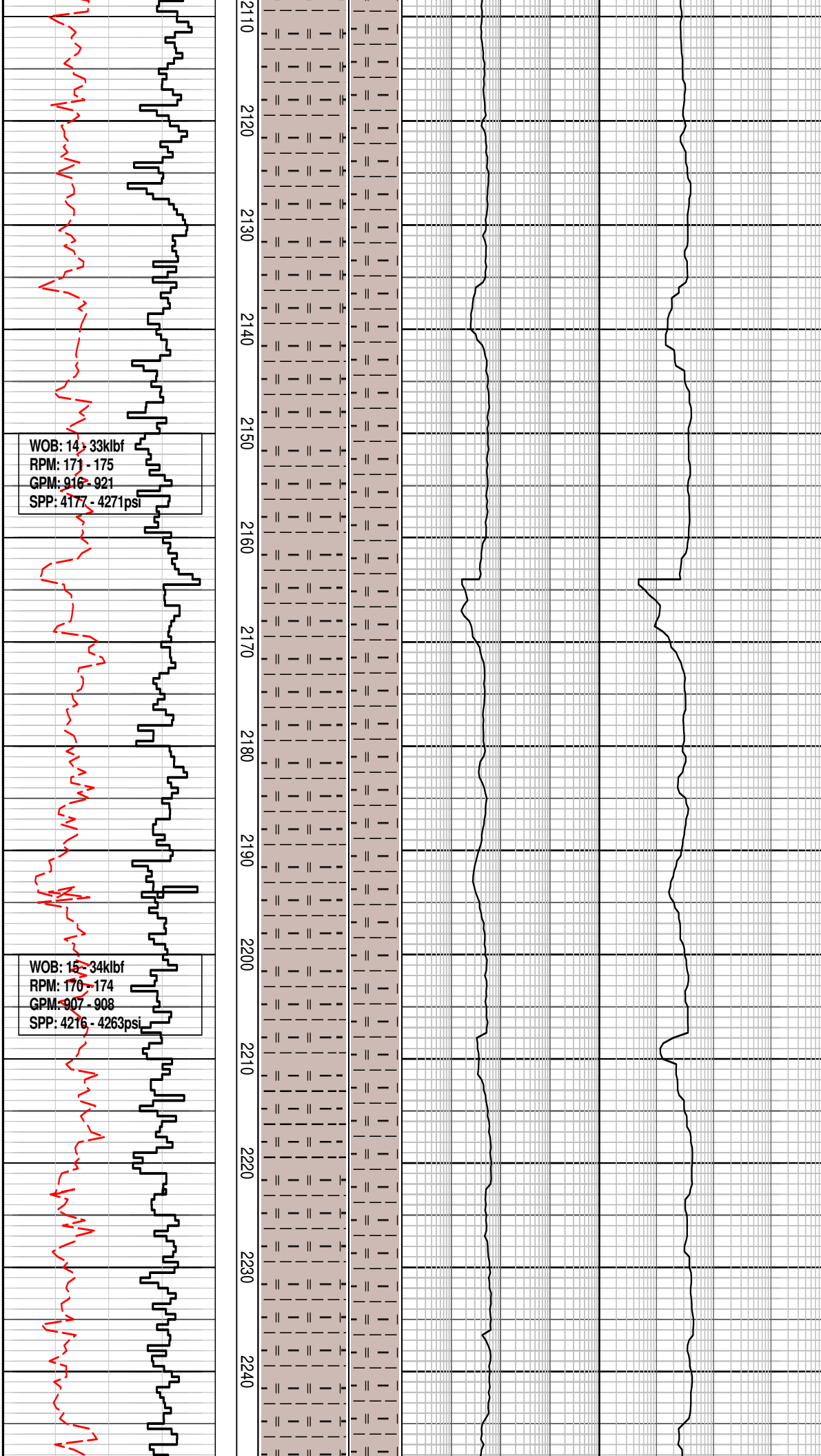












WOB: 14 - 33klbf  
RPM: 171 - 175  
GPM: 916 - 921  
SPP: 4177 - 4271psi

WOB: 15 - 34klbf  
RPM: 170 - 174  
GPM: 907 - 908  
SPP: 4216 - 4263psi

**CALCAREOUS CLAYSTONE:**  
mott-pch ap, lt brnsh gy-brnsh  
gy, i/p wh, frm-mod hd, i/p brit,  
sbbiky-blky, 20-25% calc, tr-3%  
calc slt, tr calc frag, tr-5% dol cmt

**SILTY CLAYSTONE:** brnsh gy-dk  
olv gy, sft-firm, amor-sbbiky,  
20-25% slt, tr v f qtz gr, tr slt-v f  
glau, tr slt lith

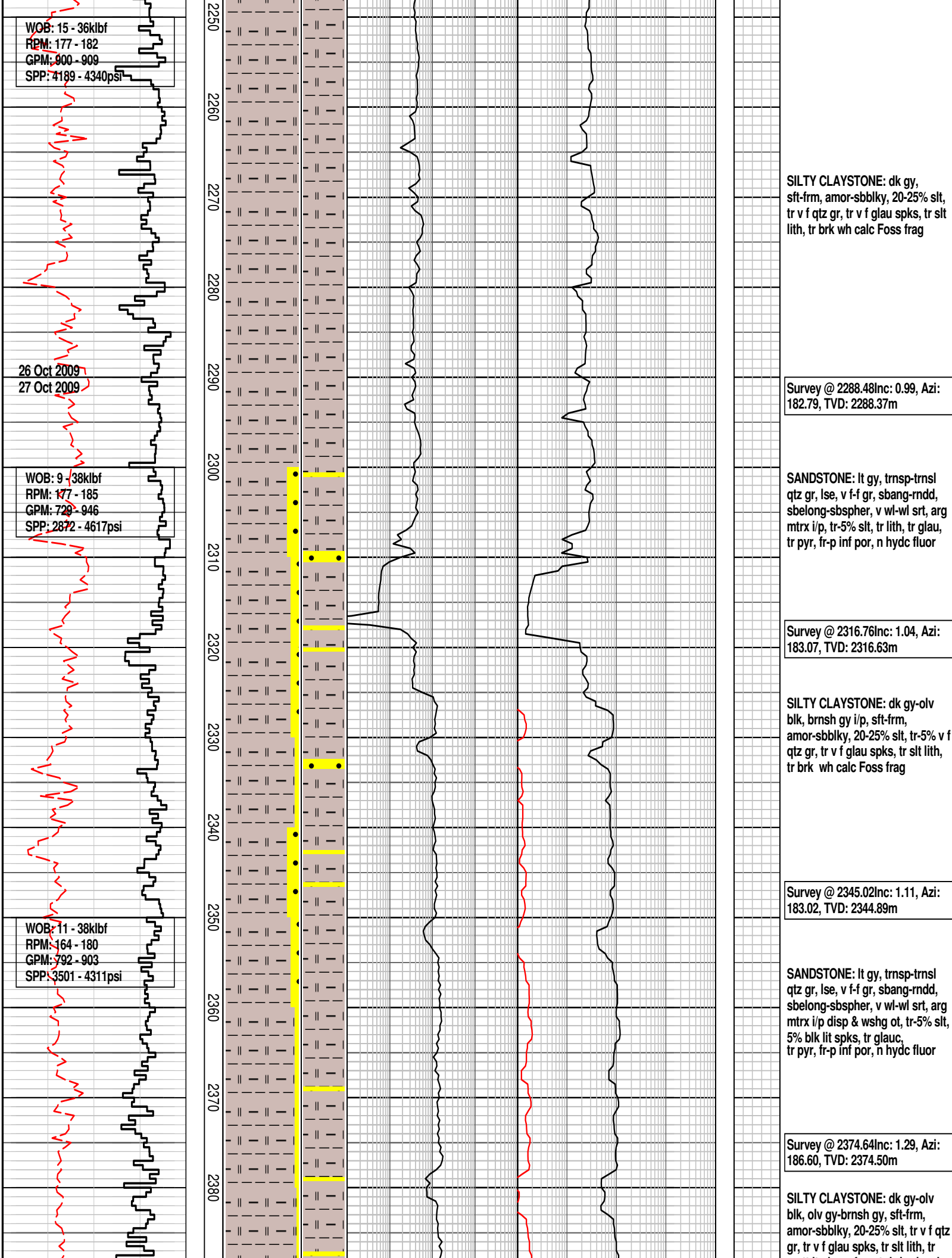
Survey @ 2201.88Inc: 0.95, Azi:  
192.05, TVD: 2201.78m

**CALCAREOUS CLAYSTONE:**  
mott-pch ap, lt brnsh gy-brnsh  
gy, i/p wh, frm-mod hd, i/p brit,  
sbbiky-blky, 20-25% calc, tr-3%  
calc slt, tr calc frag, i/p hd dol  
cmt

Type: Ultradril  
MW: 10.8ppg FV:74  
PV:21 Gel:7/10/11  
YP:32 pH:10.0

**SILTY CLAYSTONE:** dk gy, mnr  
brnsh gy-dk olv gy, sft-firm,  
amor-sbbiky, 20-25% slt, tr v f qtz  
gr, tr v f glau spks, tr slt lith





**SANDSTONE:** lt gy, trnsp-trnsl  
qtz gr, lse, v f-f gr, sbang-rnnd,  
sbelong-sbsphr, v wl-wl srt, arg  
mtrx i/p disp & wshg ot, tr-5% slt,  
5% blk lith spks, tr glau, tr pyr,  
tr glau, tr pyr, p-i/p inf por, n  
hydc fluor

WOB: 20 - 35klbf  
RPM: 161 - 166  
GPM: 847 - 884  
SPP: 4161 - 4228psi



P F G

